

# 1 ATTENTIONS

## 1.1 Specific Indications

To make you understand and attention, we will alert& remind you on this chapter or following chapters regarding product safety and concerned information. These specific warning sentences will be indicated as below:

- ◆ **【Dangerous】** —— Indicate to be alert for high danger.
- ◆ **【Warning】** —— Indicate to be alert for middle danger.
- ◆ **【Attentions】** —— Indicate to pay attentions for light danger.
- ◆ **【Forbidden】** —— Indicate to forbid dangerous operations.
- ◆ **【Remind】** —— Indicate to pay attention for safety or other information.

Please kindly note that safety information provided by this chapter is not total& incomplete. For your safety and benefits, we will edit the partial product safety information on the following chapters if necessary. You should read carefully wherever information was. Meanwhile, besides attention issue indicated by specific sentences, you should pay attention to the other content and introduction of Manual also.

## 1.2 Important indications- Must read carefully

This machine belongs to Hi-Tech& precise digital product. You must read operation indication carefully.

### Specific Indications

When machine is not used, pls help to power off, to adapt LCD protection program, or setup the unit standby or sleep stage. If LCD display one image too long, the natural character of LCD will make screen bright down and have some shadows.

1. LCD Maintenance
  - Don't put any heavy materials on machine
  - When using handbag or belt-bag, pls ensure that you don't put many thing, moreover, no burden machine directly.
  - Don't grasp,twist or knock the surface of LCD.
  - Don't exposure LCD to very hot or moisture environment.
  - Don't exposure LCD under direct sunshine or very strong light too long.
2. To avoid the machine too hot, pls ensure the hole of ventilation and heat dissipation not block
3. When system visit the outside CD-ROM or other media, don't remove. Otherwise, may

cause bankrupt of system or loss of information.

4. Don't dispatch the HD when system working, which will cause destroy unit and loss of information. Format HD will delete all information on it, pls backup in advance. We will not be obligation to this responsibility.
5. For your unit safety, pls ensure that the adapter connect earth, when using the outside power supply. If you don't want to use unit long time, pls pull out the plug to avoid system destroyed owing to temporally higher voltage.If you don't understand the local standard voltage SPEC, pls contact your distributor or local electric company for inquiry. When clearing unit, pls ensure that you must pull out plug in advance. Don't disassemble the adaptor.
6. Don't use other adaptor which is not standard package, otherwise, maybe will destroy the machine.

### 1.3 Attention Issues

#### Applied Group

##### **【Attentions】**

Using this machine, who should have certain basic computer knowledge. Meanwhile, this unit is not suitable for operation by children independently. If necessary, should be accompanied by adults.

#### Operation Environment

##### **【Dangerous】**

To avoid accident problems, the machine should be used under the below limited operation environment

Content	Suitable Range	Remarks
Storage&TransportationTemp.	-20℃-60℃	
Storage&Transportation Humidity	5%-95%(40℃)	
Atmospheric Pressure	86kpa-106kpa	
Power Supply	220V±22V, 50HZ±1HZ	
Operating Temp.	20%-80%	
Operating Humidity	5℃-40℃	

##### **【Warning】**

To avoid that machine was destroyed under such environment(Mositure; Dirty; Food; Liquid; Exposure under the sunshine directly), should be put on ventilated&dry place.

To avoid disturb&destroy by magnetic field, pls keep the machine away the home appliance (e.g.

TV/Air-condition.....)

Don't splash liquid or other sundries into machine, otherwise, perhaps will cause electric shock or fire owing to internal short circuit.

**【Attentions】**

If the machine turn on under conditions of lower Temp. and non-restore, perhaps cause the problems that can't repair. So, before using, pls ensure that the unit was restored over 2 Hours under the normal room Temp.

**【Warning】**

After storage and transportation under 10℃ environment, pls keep over 2 hours under the room Temp. 10℃-40℃, to avoid power-up destroy owing to lower Temp. of machine. During this period, don't turn on machine, to avoid frost & water-condensation destroy owing to fast Temp. up.

**【Attentions】**

Before using, also need ensure compliance with requirement of manual, e.g. machine's connect, adaptor usage, or other issues.

**Removal, Transportation, Storage**

**【Attentions】**

When moving machine, pls kindly be alert: Light pick, Light put.

When transportation, the machine should be put inside original carton, comply with the shipping marks& indications, moreover, using sealed truck for transportation.

The packaging materials should be put where the children can't touch, to avoid unsafety happens.

**【Battery】**

Installation and replacement of Lithium battery; only permit to use replaced battery which was recommended by manufacturer; Pls ensure to handle the use-up battery well, improper disposal will cause serious environment pollution.

**1.4 Notice of battery use—Please read carefully**

Please comply with below rules, and nice to handle your battery.

**New battery**

New battery, 1<sup>st</sup> proper usage will affect life time and capability of battery, so you should remember the below points before using new battery:

1. New battery will have a little residual electricity, you should use out the residual battery at the first time, and then charge to connect outside power supply. It will be better that you continue to charge over 2 hours after charging fully firstly.
2. After fully charging, must use out the electricity, and then recharge. The 2<sup>nd</sup>&third charge is same as 1<sup>st</sup> time to activate battery, this will settle the better basis for the future usage.

### **Life time of battery**

The battery longevity will be calculated from package finish, which means start of battery life time count down, moreover, don't care you use or not, its life time is weakening. The using time of battery will shorten accordingly. In generally, the standard charge&discharge times is about 300-500 before deadline of battery usage limited years.

### **Factors which affect using life time of battery**

When using unit, some factors will make the battery wastage, even cause the life time is lower than standard. But, this does mean that battery has quality& performance problems. Factors which will affect the life time of battery as below:

Factor 1: CPU speed and proper installation of Intel chipset driver can make system adjust the CPU speed through INTEL "Speed Step" technology, and then delay the battery using time on applied system.

Factor 2: Reading CD,DVD,CD-RW and HD frequently; Copying CD files into HD directly, Watching films, Burning CD and other operations will all affect the battery using time.

Factor 3: Total number of SDRAM&RAM: If system open many applied program, which will occupy HD space as files exchange(virtual memory), so will cause HD reading& writing frequently, to shoten battery using time.

Factor 4: Some applied software background processing automatically will burden CPU , and make the battery using time slowdown. We suggest that you can close some background processing software, and only process some necessary applied software.

Factor 5: Backlit brightness of LCD: More lower setuping backlit brightness; More longer battery using time.

Factor 6: Power supply management and Speed Step setup: Setuping different using solution of power supply will affect the battery using time.

Factor 7: Battery life time: Average life time is about 1 year, with increase of using time& times, it was normal that the using time will be decreased step by step.

Factor 8: Deeper application (e.g. Watching DVD and 3D game) for CPU and system equipments will make the battery using time decrease fast.

Factor 9: Wireless& BT devices will all speed up the wastage of battery. If no need wireless functions, may shut up to save battery.

Factor 10: Under the using environment which is too lower or too higher temperature, the activity of battery cell will be affected, and then will decrease the battery using& life time.

### **How to do when battery can't charge or can't charge fully?**

Can't charge, The charge indication light can't work, can't turn on by battery: Pls help to send the unit to local after-service center for further testing if need replace the battery owing to battery problem.

Can't charge to 100% fully, fast using out with fully charge: Battery belongs to expandable. Warranty period is shorter. When the battery life time ending, may appear situation which the unit

only used several minutes, even indicated full battery volume. At this moment, it's time to replace 1pcs new battery for you.

### **How to save, if the battery does not use for a long time?**

Charge or discharge to about 40%, and then placed in temperature of 15 to 25 degrees Celsius dry preservation, the temperature is too high and too low are easy to accelerate cell aging.

### **Why is charging light has been extinguished, but the battery power indicator to see the status of 95% - 99%, does the battery have problem?**

Charging indicator light switch from eradication of factors, based on whether the reference to the battery has reached saturation voltage as a reference point, in the saturation range of 95% ~ 99% of the near saturation voltage, it will detect the voltage difference with the smaller, also lowered the charge current in order to avoid over-current or over-voltage charging, causing the battery damage.

In this last phase of the small current charge designed to take into account to avoid the client forgot to continue once the battery capacity of the battery unplugged for too long a long time high current charging. Therefore, the battery charge is not a problem, it is not machine-to-battery charging problem. But because, 95% ~ 99% are micro-charging, and will not trigger the charging indicator light. Please feel at ease to use.

### **Why is the battery fully charged battery will decline to place a few days?**

A normal rechargeable batteries are present internal friction. Lithium battery is able to store electricity is produced from the chemical activity of lithium-ion reactions achieved. Inside the battery when not in use the active ingredient will gradually revert to the low electric potential state, that is, while not using battery power, but it also will continue to decline, the rate of decline of electricity and the surrounding environment such as temperature and humidity are closely relationship, usually the higher the temperature, power down faster rate. If possible, try to charge the battery to 40% placed in a cool place. This allows the preservation of a long period of battery operation of its own protection circuit. If the battery is fully charged, will be placed at high temperatures, so that the battery will cause great damage.

### **The battery can only be used in the machine.**

If you replace the battery types may be inappropriate to risk of explosion. Can only use the same type of original battery or recommended for confirmation by the original types of the same level of the battery to be replaced.

Do not disassemble the battery.

Do not expose the battery to fire or water.

In order to prevent fire, burn or damage the battery, do not let the battery run into metal objects at the poles.

Dealing with damage or leakage of the battery when you care. If you accidentally touch the battery fluid, please quickly wash with soap and water. If you come into contact with eyes, rinse eyes with water for 15 minutes, and as soon as possible to the hospital for treatment.

If the ambient temperature is high, do not charge.  
Store, do not expose the battery to high temperatures.

## 1.5 Power

You need to use a qualified power plugs and sockets, power plugs should eventually be inserted in the grounding a good power supply, good grounding is your normal work of an important guarantee for the machine. If you arbitrarily change the standard power cord, may have serious consequences, while the maximum length of the power cord should not exceed 5 meters.

When you use the power before the power plugs and sockets should be the instructions to verify compliance with these machines use the power requirements of qualified power supply is the basic guarantee for the machine work properly. Otherwise, it may bring serious consequences.

### **【Dangerous】**

Thunderstorms during the use of machinery may be the machine or even your personal and other property damage. Therefore, in a lightning storm, do not use the machine and disconnect the network cable, power cord, which may be connected with the outside conductor. Thunder, do not plug these cables.

### **【Note】**

Double-check the supplied AC power cord. If a problem arises, please contact the relevant vendor. Power supply for the machine must conform to safety standards:

## 1.6 Safety

1. Power outlet hole should be installed next to or near the device can easily operate the place, plug a power source, to avoid the direct use of pull wires pull out of the way, be sure to pull out from the plug at in order to ensure safety, to guard against electric shock. Do not open the power adapter
2. Do not be put this product near water with the place.
3. Use a stable support when you put things on. The product may fall because of placement instability, causing serious damage.
4. Do not put this product wires coming and going places, so as not to step on a bad wire. Do any items placed on the wire.
5. Follow all warnings marked the above information and products.
6. If you do not intend to use this product a long time, please unplug the power plug in order to avoid excessive transient voltage damage
7. Do not spill any liquid into this product, this action may cause a fire or electric shock hazard.
8. Any of the following conditions, please by qualified professionals to serve the
  - a. When the power cord or plug is damaged, or worn
  - b. By liquid spilled into
  - c. This product had been subjected to rain or water splashed

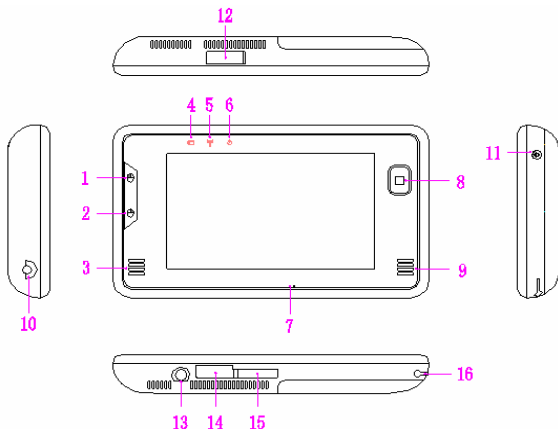
- d. When you have followed the instructions of the operation, but this product still does not work
  - e. This product has been dropped or the casing damaged
  - f. This product have shown significant damage
9. Temperature range is not required to use and storage, the product may cause permanent damage
  10. Do not near water or other liquids where the use of power adapter. Do not spill liquid into the power adapter on

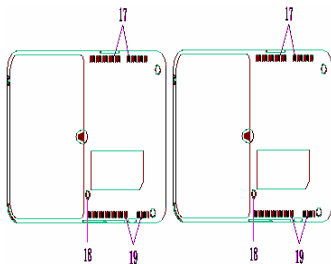
Note: This manual diagram of all the pictures are for reference only, subject to a specific kind.

## 2 Product Overview

### 2.1 Introduction

Note: The following are schematic in order to prevail in kind  
View full results:





Picture to the actual machine subject to

- |                                        |                                   |
|----------------------------------------|-----------------------------------|
| <b>1</b> The left mouse button         | <b>11</b> power switch            |
| <b>2</b> mouse right button            | <b>12</b> USB                     |
| <b>3</b> Left speaker                  | <b>13</b> headphone jack          |
| <b>4</b> Charging Indicator            | <b>14</b> USB                     |
| <b>5</b> WIFI indicator                | <b>15</b> Micro-SD card connector |
| <b>6</b> Power LED                     | <b>16</b> pen                     |
| <b>7</b> Microphone                    | <b>17</b> cooling holes           |
| <b>8</b> -infrared light-sensing mouse | <b>18</b> bracket screw hole      |
| <b>9</b> Right Speaker                 | <b>19</b> cooling holes           |
| <b>10</b> Power Interface              |                                   |

## 2.2 Indicator

On your machine, there are two LED lights on the computer itself can provide you with useful information on the status of

Indicator Name	Function
Charging Indicator	Chang-Liang - Charging Indicator Flashing - Low Voltage Alarm

	Out - the battery is full
WIFI indicator	Is enabled when you open the wireless WIFI
Power LED	on- lighting state Scintillation-The system is in standby mode

### 2.3 Open and check

Please be careful out removal of packaging machines and other accessories, such as the discovery of damage and omissions, please immediately contact the dealer.

Please save the original packing material

Generally contains the following parts

1. Machine
2. Power Adapter
3. User's Guide
4. Driver CD-ROM
5. Battery
6. Protective Case

### Optional accessories, contact your dealer if the demand

1. Bluetooth GPS
2. Car Chargers

## 3 My computer

### 3.1 Basic Configuration

CPU	Intel atom Z510 1.1GHz
Chipset	US15W
LCD	5" TFT Touch Screen ( 800×480 )
Memory	DDR2 /1G/667MHz
Graphics	Intel GMA500
Storage	8G/16G/32G SSD
Internet Connection	Wireless LAN 802.11b/g/ Support 3G
Camera	Webcam 0.3 Mega Pixel
USB interface	USB interface 2.0×2
Size	160mm×95 mm×22 mm
Weight	350g

### 3.2 The use of touch-screen

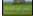
When the system running into the desktop interface, the touch screen can be used by default, using the method can be directly with your fingers touch, you can also through the use of standard handwriting pen directly hits, if we find the scope of the stylus deviation great hits, then the

through the screen calibration touch points to re-locate the center of an accurate location can be achieved after correction for better touch effects.



**Touch Screen Calibration Software icon**

### **3.3 Use of on-screen keyboard**

When the time into the system, click the desktop  icon, On the screen will pop up with a button keyboard, screen keyboard can be minimized to the taskbar, to facilitate the next time you use, you can also put the software to your system startup, in each time into the system can automatically startup screen keyboard.

### **3.5 Handwriting pen**

When you need text input, when you can use handwriting pen input method, but relevant to the needs of this input method software support.

## **4 Basic use of common sense**

### **4.1 Started using a computer**

This chapter will guide you to start using the machine, boot from the machine, shut down to some basic operations, as well as the use of additional accessories

#### **External Power**

The machine can be an external AC power or internal battery pack. When you first boot, it is recommended you use an external power supply.

**【Note】** Please use the attached power adapter random, arbitrary use of other power adapter will be very likely to damage the computer.

Please make sure the machine is turned off.

The power adapter DC power cord into the power port on the machine.

**【Note】** For unplug the power adapter, please unplug the AC power adapter end, and then unplug the machine's DC power connector, or may cause the machine and adapters to external voltage surge damaged. Unplug the plug, not to Pull wires, use hand pull the plug.

#### **Powering on and off the machine**

## Boot

Make sure the machine has been connected to the power adapter or install a good battery pack. Press the power button about 2 seconds.

## Stop using the computer

When you are done, you can power off the machine or let the machine into standby mode:

mode	Method	Re-boot or use of the method
Shutdown	In accordance with the operating system shutdown process, press the power button for one second into the system shutdown procedure. When the system resource conflicts caused by the computer does not respond to user operations (including the normal shutdown action), can directly press the power button to force the machine off by pressing the power button for more than 4 seconds until the computer is shut down, but will not lose Save the data or files.	Power button
(Standby)	You can enter standby mode through Windows.	Power button

### **This product meets the following normative documents:**

GB4943 《the security of information technology equipment》

GB9254 《Information technology equipment and methods of measurement of radio disturbance limits》

GB17625.1 《EMC emission limits for harmonic current limits (per-phase input equipment ≤ 16A) 》

GB/T9813 《General Specification for Microcomputer》

## **4.2 Display**

The machine uses 16 million color TFT LCD, support 800 \* 480 resolution, to bring you an extraordinary visual experience.

**【Note】** In order to extend your battery life, in a comfortable viewing brightness under the premise will be the minimum, so that the internal

The light source may be using less power.

#### 4.3 LAN card and Wireless Network

The machine uses a USB Ethernet 100Mbps wired LAN card to realize the connection, first native USB Ethernet card into the USB port, depending on your operating system requires the installation of a good USB Ethernet card driver, and then insert one end of the LAN cable USB network card RJ45 side, you can achieve in this web-based data transmission has.

#### 4.4 Wireless Network

The machine built-in wireless card WIFI, every time you start the machine when the default is open.

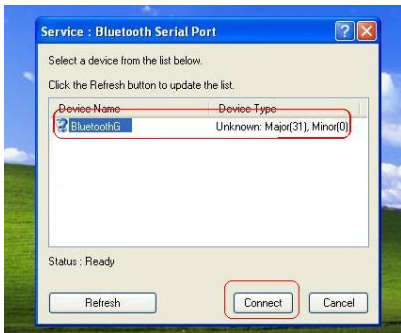
#### 4.5 Bluetooth and Bluetooth GPS (optional)

The machine built-in Bluetooth device, the machine each time it starts by default open. Bluetooth GPS use, open the GPS-power switch.

Right-click the Bluetooth icon, and Quick Connect -> Bluetooth Serial Port - "other equipment (see picture)



Select Bluetooth device, and connectivity (see this picture)



**Connecting**



**Input Matching Numbers: 0000**



**Map of COM port settings - system detects the COM port, baud rate of 9600.**



#### **4.6 3G use**

3G mobile operators to provide 3G will usually dial-up software, you can ask your 3G service provider, to provide you with dial-up software.

#### **5 driver installation and use instructions**

In this chapter describes how to use the accompanying CD-ROM to install drivers.

Your machine shipped with a driver CD-ROM at the same time. CD-ROM containing the corresponding device inside the driver. This chapter will guide you through how to install these drivers.

The computer supports Windows XP systems. Please install the following order of driver installation: (root

According to what you have installed the operating system choose a different path to install)

Note: This machine no Modem, you do not need to install, please skip.

Directory Name	Driver Name	Description
Chipset	Chipset Driver	Be sure to install this program, can only ensure that the other driver functions
VGA	Display Driver	VGA display ensure that the full functionality allows you to set the screen resolution and richer color
Audio	Audio Driver	Allows you to use and configure the computer's audio
WLAN+Bluetooth	Wireless networking and Bluetooth drivers	

## 6 Failure Analysis and Processing

In this chapter describes how to solve the general hardware and software problems.

Prior to shipment of your machine have undergone a complete test, meet the system requirements specifications. However, incorrect operation or the transportation process in the omission would lead to problems.

This chapter will address you may encounter a general hardware and software to provide reference and identification information.

When you encounter problems, you can first try to deal with in accordance with instructions in this chapter. If the error situation persists, please contact the dealer service information.

### 6.1 Sound

#### Sound

- Double-click the speaker icon in the taskbar bottom right corner to see whether the speaker volume has been turned off.
- Most of the sound problems are software-related. If your computer before the sound is normal, the possible reason is that the software settings are incorrect.

Not recording

Double-click the speaker icon in the taskbar bottom right corner to see whether the volume of the microphone had been turned off, or a microphone is set to a minimum.

1. Click the "Options" and select "Properties."
2. Select "Mic Volume" and click "OK" button, recording volume control panel pop up.

Note: Setting Method Please refer to Readme file under the sound card.

## **6.2 hard drive**

Hard drive speed is too slow

If your hard disk is used for a long period of time, too much clutter and paper will lead to a lot of disk fragmentation. Go to [Start "program" Accessories "System Tools" Disk Defragmenter program to perform disk finishing. This operation may take a little time.

Your hard drive may be infected with a virus.

File damaged

Requests the Executive "ScanDisk" surface scan to check the disk. Double-click [My Computer], right-click C:, select [is Sex], in [Tools] tab inside the troubleshooting status click [Check Now] implementation of the disk scanner.

## **6.3 Display problems**

When the system boot, black

Make sure that the machine "standby" mode. Under these models, the display will be shut down to conserve energy.

Please use the software features to increase the brightness of the screen.

Screen difficult to read

Please use the software features to increase the brightness of the screen.

Adjust the screen resolution in order to obtain the best display.

Screen Flicker

When you turn on or off to see the screen flashes several times, this is a normal phenomenon.

Residual Image

LCD display screen that may arise when switching the screen image residual phenomenon, especially in a long time after the show still images.

What is the image left?

Under normal conditions the use of LCD display screen that does not produce residual images. Normal conditions is defined as the required changes in the environment shown in successive images. If the still picture display time is too long, it may result in charge differences between pixel electrodes. Such differences can lead to accumulation of certain areas of the electrode charge, and affect the arrangement of liquid crystal molecules. Such a picture would be left before the new screen. Includes



Operating system in-memory operations issued an error message

- This is usually software or Windows-related issues.
- Please close the application software which you don't use and reboot.

## **The specification**

### **CPU**

Intel Atom Z510, 1.1GHz CPU。

### **Chipst**

US15W.

### **ROM BIOS**

AMI

### **System Memory**

Onboard 1GB DDR2 memory.

### **Screen**

5 "LCD Color LCD display.

### **Display Controller**

Intel Integrated GMA500

### **Storage Media**

Half 1.8 "mini PATA hard drive interface electronics.

### **Audio**

A headphone output jack.

### **I / O connectors**

A headphone jack;

2 USB2.0 interface;

A micro SD card jack;

1 DC-IN socket;

A SIM card connector

### **Wireless**

Built-in 802.11b / g wireless card.

### **Camera**

0.3 Mega-pixel built-in camera

### **Bluetooth**

Built-in Bluetooth 2.0

### **Power**

Power adapter: Input: 100-240V ~ ,50-60 Hz Output: 12V 2A.

### **Battery**

Smart Li-ion battery, use of time is approximately 3 hours. The actual use of time depending on battery condition and the specific use conditions.

### **The battery life test conditions:**

1) System: Windows XP Professional.

- 2) Computer BatteryMark 4.01.
- 3) Power Management: regulating the power use of the program was the largest battery mode.
- 4) Ambient temperature: room temperature.
- 5) Screen Brightness: transferred relatively dark.
- 6) The closure of some of the features and remove all external devices (
- 7) Test the system before the anti-virus, virus-free only after confirmation test.

The work of a larger power consumption, the actual battery life over time will be less than the test time.

#### Battery Description:

This time for the computer BatteryMark Max Battery mode at room temperature, the test data, the battery of specific working hours may also be subject to the following factors: the battery charge and discharge times, operating system, computer configuration, LCD screen brightness settings, applications (especially video playback, such as playing DVD, etc.), power management settings and features of the use of computers are likely to increase the power consumption thus affecting the battery life. As part of the computer virus may cause the system to operate at full capacity, this time may also reduce system battery life.

Generally is limited battery life, battery performance and the use of time increases with the frequency of use has decreased, this normal battery wear and tear is normal. If your battery end of life, you can choose to purchase a nearby pit Founder original battery accessories.

#### **Size**

Approximately 160mm (W) x95mm (H) x22 mm (D)

Weight:About 350g (including battery)

Note: The weight is only the basic system as shown in weight, the weight values of reference only, the actual weight will be different because of configuration changes.

Note: due to computer configuration updates faster product specifications, product specifications are subject to change without notice in order to subject the user to buy the machine configuration.